



United States Department of the Interior

BUREAU OF LAND MANAGEMENT

Phoenix District

Hassayampa Field Office

21605 North 7th Avenue

Phoenix, Arizona 85027

www.blm.gov/az/



In Reply Refer to:
1610 (P010)
Black Canyon

Dear Interested Party:

The Bureau of Land Management's (BLM) Hassayampa Field Office invites your participation in the development of the Black Canyon Recreation and Travel Management Plan. This area includes the Black Canyon and the Upper Agua Fria Management Units as designated in BLM approved Bradshaw-Harquahala Resource Management Plan (2010), which identifies allowable uses for your public lands, such as recreation and routes that would be further developed in site specific plans (See Planning Area map).

The BLM intends to develop a comprehensive trail system for motorized and non-motorized use and to guide the management of the Black Canyon National Recreation Trail (BCNRT). The plan will also address other complimentary uses such as camping, special events, trailheads, and other trail-related facilities.

In order to make decisions that conserve public lands for this and future generations, the BLM will conduct an environmental assessment and invite the public to participate. We will specifically seek input on these following topics and others that you bring to our attention:

Black Canyon National Recreation Trail (BCNRT):

- Should the BLM construct parking areas, staging areas, and/or trailheads? If so, where and what types of facilities are appropriate? (e.g. kiosks, restrooms, horse trailer parking, horse hitches, camping areas, picnic benches, etc.) Currently, the BLM proposes eight trailheads:
(See enclosed Black Canyon NRT map)
 - Bob Bentley
 - Soap Creek
 - Glorianna
 - Castle Creek
 - Bumble Bee
 - Hidden Treasure
 - Drinking Snake
 - Spring Valley
- Where should the BCNRT link to communities, other recreation sites, the Agua Fria National Monument, and/or National Forests? Possible connector trails include, but are not limited to:
(See enclosed Black Canyon NRT map)
 - Agua Fria National Monument
 - Prescott and Tonto National Forests
 - Maricopa County trail system
 - Black Canyon Heritage Park

- Communities such as Black Canyon City, Cordes Lakes, Anthem, and others
- Should the BLM construct new trails in Wilderness Character Areas? If so, to what types of uses should they be open? (e.g. proposed Slate Creek Loop of the BCNRT)
- Should the BLM enact protective measures along the BCNRT to respond to public health and safety concerns? If so, what are the concerns and what protections should be considered?
- Should the BLM authorize Special Recreation Permits (SRPs) for commercial, competitive, organized group activities, and events on the BCNRT? Are limits needed on SRPs? (e.g. number of permits, what types of events, group size, seasonal limitations, etc.)

Travel Management:

- The BLM is considering designating a route system containing approximately 325 miles of roads, primitive roads, and trails. (See enclosed Planning Area map)
 - Where are parking areas needed to accommodate use and future growth?
 - Are there existing routes that could provide loop trail opportunities or could connector routes be built to provide those opportunities?
 - Are there routes to specific destinations that should be designated as open? Are there more than one route to a destination where one route should be closed, or are there specific routes that should be closed?
 - Are there areas for specialized use that need consideration? (e.g. 4WD rock crawling sites, access to specific natural features)
 - What are your suggestions with regard to improving safety, compliance with existing laws and maintaining access for the public's use of BLM administered public land?

You are invited to attend any of three public meetings that will be held to discuss the proposed project. Meeting dates, times, and locations are as follows:

<u>Date</u>	<u>Time</u>	<u>Location</u>
06/10/2014	6:00pm	Mayer High School 17300 E. Mule Deer Drive, Spring Valley, AZ 86333
06/12/2014	6:00pm	Deer Valley Community Center 2001 W. Wahalla Lane, Phoenix, AZ 85027
*06/24/2014	2:00pm	BLM Phoenix District Office 21605 N. 7 th Avenue, Phoenix, AZ 85027

*This meeting is open to all public participants, but will be focused on Special Recreation Permit (SRP) holders and prospective SRP holders. Anyone interested in this topic is urged to attend this meeting.

The purpose of these meetings and the development of an environmental assessment is to gather public input for a collaborative plan, following the National Environmental Policy Act process. You can make a difference by providing us with your ideas, comments, or concerns about the proposed project.

The official 45 day comment period for the project will occur from June 1st through July 15, 2014. Information about the project will be available on the BLM website at <https://ilnmirm0ap601.blm.doi.net:9944/epl-back-office/eplanning/planAndProjectSite.do?methodName=renderDefaultPlanOrProjectSite&projectId=35363&dctmId=0b0003e88044d04f> or at this simplified URL: <http://on.doi.gov/1jIqV3q>

We will continue to gather public input beyond the official comment period via a discussion board on the web at <http://blackcanyon.mindmixer.com/> . The discussion board will be available starting June 1st, 2014.

You can submit your comments on the proposed project via:

- The Discussion Board on <http://blackcanyon.mindmixer.com/>
- You may submit your comments electronically by emailing them to: blm_az_blackcanyon@blm.gov
- You may mail your comments to: BLM Hassayampa Field Office, ATTN: Victor Vizcaino, Black Canyon, 21605 North 7th Avenue, Phoenix, Arizona 85027.
- You may fax your comments to: Victor Vizcaino at 623-580-5580.
- Before including your address, phone number, email address, or other personal identifying information in your comment, you should be aware that your entire comment - including your personal identifying information - may be made publicly available at any time. While you can ask us in your comment to withhold your personal identifying information from public review, we cannot guarantee that we will be able to do so.

If you have any question about this project, please contact Victor Vizcaino, BLM Hassayampa Field Office Recreation Technician at 623-580-5520, yvizcaino@blm.gov, or Tom Bickauskas, BLM Hassayampa Field Office Travel Management Coordinator at 623-580-5502, tbickaus@blm.gov .

Sincerely,

A handwritten signature in blue ink that reads "D. Remington Hawes". The signature is written in a cursive style with a large initial "D".

D. Remington Hawes
Field Manager

Enclosure

Black Canyon Recreation & Travel Management Plan

Planning Area

UNITED STATES

DEPARTMENT OF THE INTERIOR
BUREAU OF LAND MANAGEMENT



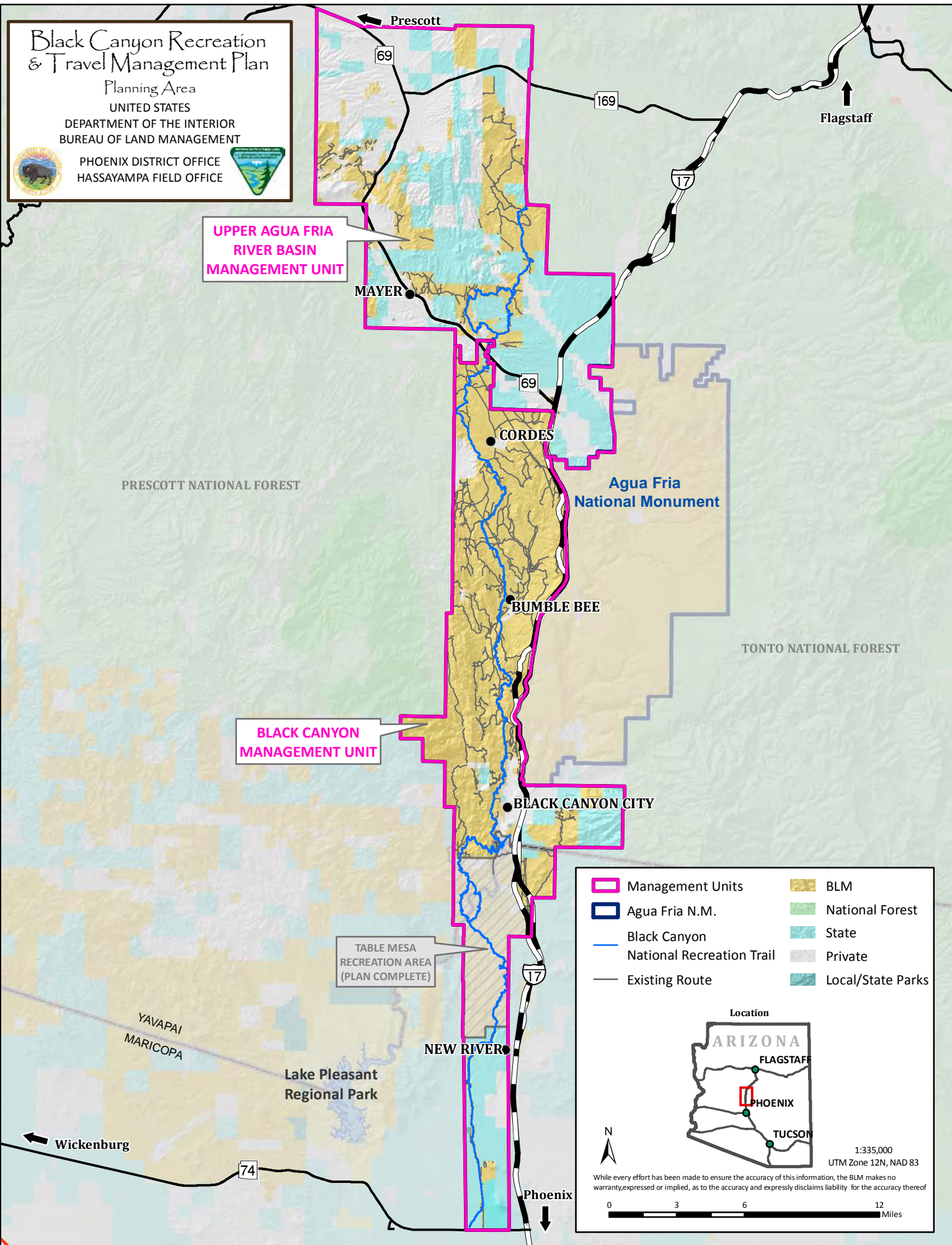
PHOENIX DISTRICT OFFICE
HASSAYAMPA FIELD OFFICE



**UPPER AGUA FRIA
RIVER BASIN
MANAGEMENT UNIT**

**BLACK CANYON
MANAGEMENT UNIT**

TABLE MESA
RECREATION AREA
(PLAN COMPLETE)



- Management Units
- Agua Fria N.M.
- Black Canyon National Recreation Trail
- Existing Route
- BLM
- National Forest
- State
- Private
- Local/State Parks



Location
ARIZONA
FLAGSTAFF
PHOENIX
TUCSON

1:335,000
UTM Zone 12N, NAD 83

While every effort has been made to ensure the accuracy of this information, the BLM makes no warranty, expressed or implied, as to the accuracy and expressly disclaims liability for the accuracy thereof

0 3 6 12 Miles

Black Canyon Recreation & Travel Management Plan

Black Canyon NRT

UNITED STATES

DEPARTMENT OF THE INTERIOR
BUREAU OF LAND MANAGEMENT



PHOENIX DISTRICT OFFICE
HASSAYAMPA FIELD OFFICE



MAYER

MAYER PROPOSED CONNECTOR ROUTE

PRESCOTT FOREST PROPOSED CONNECTOR ROUTE

CORDES

BADGER SPRINGS PROPOSED CONNECTOR ROUTE

Agua Fria National Monument

BUMBLE BEE

AGUA FRIA N.M. PROPOSED CONNECTOR ROUTE

TONTO NATIONAL FOREST

PROPOSED SLATE CREEK LOOP
6.2 MILES

HERITAGE PARK PROPOSED CONNECTOR ROUTE

BLACK CANYON CITY

NEW RIVER

Lake Pleasant Regional Park

- ▲ 1 Bob Bentley Trailhead
- ▲ 2 Emery Henderson Trailhead
- ▲ 3 Table Mesa Trailhead
- ▲ 4 Black Canyon City Trailhead
- ▲ 5 Soap Creek Trailhead
- ▲ 6 Glorianna Trailhead
- ▲ 7 Castle Creek Trailhead
- ▲ 8 Bumble Bee Trailhead
- ▲ 9 Hidden Treasure Trailhead
- ▲ 10 Drinking Snake Trailhead
- ▲ 11 Spring Valley Trailhead
- ▲ 12 Big Bug Trailhead

- Agua Fria N.M.
- Black Canyon National Recreation Trail
- Proposed Slate Creek Loop
- Proposed Connector Routes
- ▲ Proposed Trailhead
- ▲ Existing Trailhead
- BLM
- National Forest
- State
- Private
- Local/State Parks



While every effort has been made to ensure the accuracy of this information, the BLM makes no warranty, expressed or implied, as to the accuracy and expressly disclaims liability for the accuracy thereof

0 2.5 5 10 Miles

1:300,000
UTM Zone 12N, NAD 83